

# Xerox<sup>®</sup> DocuMate<sup>®</sup> 6460 and 6480

## Powerful scanners with advanced features for businesses of any size.

### Features:

- Barcode Recognition Software
- Visioneer<sup>®</sup> Acuity image enhancement software
- Scans Plastic ID cards
- Max document size 9.5" x 236"
- Create searchable PDF files to make it easy to find scanned documents
- Scan speeds up to 80 ppm / 160 ipm for DocuMate 6480
- Scan speeds up to 60 ppm / 120 ipm for DocuMate 6460
- 10,000 page daily duty cycle



### **DIGITIZING ALL PAPER**

In today's digital world, it's important to be able to manage and access the data trapped in ever-increasing stacks of paper documents. The Xerox<sup>®</sup> DocuMate<sup>®</sup> 6460 and DocuMate 6480 provide one of the fastest and most user-friendly ways to harness paper into the digital realm, helping organizations manage their scanned information. These compact desktop scanners have everything you need to digitize all your paper documents:

**Speed** – Load up to 120 mixed sized documents into the document feeder and scan them at speeds of up to 120 images (60 pages) per minute for DocuMate 6460, and 160 images (80 pages) per minute for DocuMate 6480, through a high speed USB 3.0 connection. Scanning will be done quickly and the resulting files may even look better than the originals when you apply the software in the bundled suite from Visioneer.

**Reliability** – The active reversing rollers and ball bearing fitted inside the paper feeding mechanism enhances reliability and provides a maximum daily duty cycle of 10,000 pages. An advanced light array increases the amount of light sources from 1 LED

to 45 LEDs, providing superior lighting to produce superior images. Ultrasonic Multi-Feed Detection allows you to correct overlapped paper by detecting air thickness between documents. If two documents are detected, the user will be alerted to make corrections before the scan resumes, ensuring every page is captured. The scanners also feature built-in features such as de-skew and auto-crop saving your CPU precious processing power, allowing it to receive the images at high speed.

By using two motors instead of one, the scanners can precisely pick and feed one sheet at a time at high speeds, providing years of scanning reliability.

**Searchability** – The DocuMate 6460 and 6480 will automatically transform your scans into searchable PDF files so when you need them, you can find them. The scanners are powered by Visioneer<sup>®</sup> OneTouch<sup>®</sup> technology to scan documents instantly to one of nine preset, yet completely configurable destinations. Visioneer OneTouch takes control of your document management workflows and scans in data using the optimal settings for resolution, color, duplex, auto-crop, auto-straighten and file format, and then delivers it to virtually

any application, folder or device at the touch of a button. Working together with Acuity image enhancing software, perfect scanned documents are delivered in a searchable PDF format to email, cloud or a custom web application. Not only is this a productivity gain, but it greatly reduces the training time for scanner users, further helping your return on investment.

**Versatility** – Like its predecessor, the DocuMate 6460 and DocuMate 6480 scanners provide an adjustable document feeder that will fit 9.5-inch wide documents and scan paper as long as 236 continuous inches, plus automatically trim out the margin holes from the final scanned image. This is useful when scanning dot matrix tractor feed paper or long medical chart printouts.

Both scanners fit comfortably on any desk making them the perfect solution for small and large businesses that need to digitize their paper documents. Any industry can greatly benefit from the professional features that are incorporated into these products: from banking and accounting, legal and healthcare, to transportation and manufacturing.

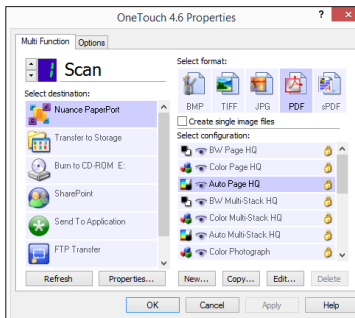
# Xerox® DocuMate® 6460 / 6480 Scanner Software and Specifications

## VISIONEER® ACUITY

Visioneer Acuity enables your scanner to instantly improve the visual clarity of the scan. Features include: patch code detection, barcode detection, scale image plus auto-crop, auto-straighten, auto-rotate, and much more, all with the touch of a button.

## VISIONEER ONETOUCH®

OneTouch connects your scanner with a powerful set of settings so with one touch of a button the scanned document is automatically sent to a preconfigured destination such as email, your printer, a file folder, or one of many cloud destinations.



## OCR AND PDF SOFTWARE

This leading, easy-to-use OCR application reduces the need of retyping and paper storage, precisely preserving the original document's layout and formatting while converting your scans into various file formats, including searchable PDF. PDF features allow you to create, convert, edit, and securely share PDF files. The resulting text can then be used in virtually any word processing, desktop publishing or web publishing program.

## DOCUMENT ORGANIZATION

To simply managing your scans, a document organizer combines the efficiency of document management, the convenience of high quality scanned documents and the power of creating PDF files, adding a new level of productivity in managing documents.

## VISIONEER TWAIN DRIVERPLUS

DriverPLUS offers an impressive array of settings to enable precise customization of the scan – far beyond current TWAIN specifications and user experience. DriverPLUS also delivers Parallel Scanning, allowing multiple same-model scanners to be connected to a single PC and run concurrent jobs. Visioneer Acuity integration adds intelligent image enhancement and PC Optimization to enable full-speed scanning.

Xerox® DocuMate® 6460 / 6480 Product Specifications		
Model Number	XDM6460-U	XDM6480-U
Xerox Part Number	100N03243	100N03244
Scan Speed: DocuMate 6480	80 ppm / 160 ipm: 200 or 300 dpi (B&W, grayscale, or color)	
Scan Speed: DocuMate 6460	60 ppm / 120 ipm: 200 or 300 dpi (B&W, grayscale, or color)	
Scan Method	Duplex Automatic Document Feeder	
Optical Resolution	200, 300, 600 dpi	
Interpolated Resolution with Visioneer Acuity	75, 100, 150, 400, 500, 1200 dpi	
Image Sensor	CCD (Charge Coupled Device)	
Light Source	LED (Light Emitting Diode) instant on	
Background	Black	
Output Bit Depth	24-bit color, 8-bit grayscale, 1-bit black & white	
Scanning Media Supported	Paper, plastic ID cards, photos	
Interface	Hi-speed USB 3.0 (2.0 compatible)	
Maximum Card Thickness	0.051" (1.25 mm)	
Scanner Dimensions (paper trays extended)	12.5" x 9.4" x 26.8" (316 x 239 x 680 mm)	
Scanner Dimensions (paper trays collapsed)	12.5" x 6.6" x 7.5" (316 x 168 x 191 mm)	
ADF Minimum Document Size	2" x 2" (51 x 51 mm)	
ADF Maximum Document Size	9.5" x 236" (241 x 5994 mm) @ 200 dpi	
Maximum Scan Area	8.5" x 236" (216 x 5994 mm) @ 200 dpi	
Document Weight	7-110 lbs. (28 – 413 g/m <sup>2</sup> paper)	
ADF Capacity	120 pages (20 lb., 75 – 90 g/m <sup>2</sup> paper)	
Weight	10.3 lb. (4.7 kg)	
Duty Cycle	10,000 pages	

## BOX CONTENTS

- Xerox® DocuMate® 6460 or 6480 Scanner
- Power Cable
- USB 3.0 Cable
- Power Supply
- Quick Installation Guide
- Technical Support Card
- DVD-ROM including:
  - User's Manual
  - Visioneer OneTouch
  - Visioneer Acuity
  - Third party OCR and Organizer software
  - Scanner Drivers: TWAIN, EMC® Captiva® ISIS® and Microsoft Windows Image Acquisition (WIA) Driver

## PC MINIMUM SYSTEM REQUIREMENTS

- Intel® Pentium® IV or equivalent processor
- Compatible with:
  - Windows® 10 Pro, Home, Enterprise and Education
  - Windows 7 Pro, Home, Enterprise and Ultimate
  - Windows 8/8.1 Pro, Core and Enterprise
- 2GB RAM
- 350 MB available hard disk space
- Dual layer DVD-ROM drive
- USB port



For more information about the Xerox line of scanners, visit [www.xeroxscanners.com](http://www.xeroxscanners.com)

©2018 Xerox Corporation. All rights reserved. Xerox®, Xerox and Design® and DocuMate® are trademarks of Xerox Corporation in the United States and/or other countries and are used under license from Xerox Corporation. Visioneer is an authorized trademark licensee of Xerox®. Visioneer and OneTouch® are trademarks of Visioneer, Inc. Microsoft®, Windows® and SharePoint® are trademarks of Microsoft Corporation in the United States and/or other countries. Intel® and Pentium® are trademarks of Intel Corporation in the U.S. and/or other countries. Universal Serial Bus is a trademark of USB Implementers Forum, Inc. (USB-IF). TWAIN™ is a trademark of TWAIN Working Group. EMC®, Captiva® and ISIS® are trademarks of EMC Corporation. Ubuntu® is a trademark of Canonical Ltd. ENERGY STAR® and the ENERGY STAR® mark are registered trademarks owned by the U.S. Environmental Protection Agency. All other trademarks are the property of their respective owners and are hereby acknowledged. Prices, features, specifications, capabilities, appearance and availability of products and services are subject to change without notice. 09/18 BR21739

